

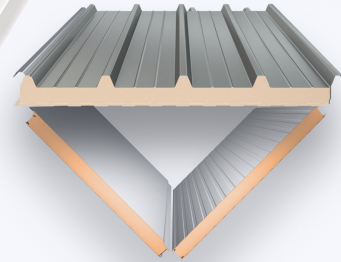


Cool Pro PIR PANELS

Polyisocyanurate panels

Cool Pro PIR panel is an insulated panel with thermal insulation core: PIR or Polyisocyanurate for extremely high fire resistance and low thermal conductivity.

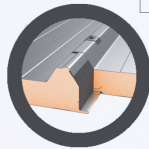
Cool Pro PIR panels have extremely low thermal conductivity and high strength-to-weight ratio. In combination with excellent manufacturing versatility, It is versatile in various applications for roofing, wall insulations and also aesthetic facade systems for the infrastructure.



COOL Pro PIR Roof Panel



PIR- Polyisocyanurate



FIXING MECHANISM
Tongue & Groove

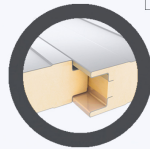
PRODUCT SPEC:

PROFILE: 35mm deep / trapezoidal.
 LENGTH: 12m
 WIDTH COVERAGE: 1060mm
 FACIA LAYER: Galvanised steel, Galvalume
 BENDING STRENGTH: 4Kg/Cm²
 FIRE RESISTANCE: Yes
 CORE TENSILE STRENGTH: >100 KPA
 SHEAR STRENGTH: >90 KPA/TD>
 TOUNG COMPRESSION MODULE: >2500kpa
 TOUNG TENSILE MODULE: >2500kpa

COOL Pro PIR Wall Panel



PIR- Polyisocyanurate



FIXING MECHANISM
Tongue & Groove

PRODUCT SPEC:

PROFILE: Flat.
 LENGTH: 12m
 WIDTH COVERAGE: 1000mm
 FACIA LAYER: Galvanised Steel, Galvalume
 BENDING STRENGTH: 4Kg/Cm²
 FIRE RESISTANCE: Yes
 CORE TENSILE STRENGTH: >100KPA
 SHEAR STRENGTH: >90KPA/TD>
 TOUNG COMPRESSION MODULE: >2500kpa
 TOUNG TENSILE MODULE: >2500KPA

DIMENSIONS & STATS

Cool Pro PIR Roof Panels

CORE THICKNESS: 25 to 200mm

TOTAL THICKNESS: CORE + 35mm

Cool Pro PIR Wall Panels

CORE THICKNESS: 25 to 200mm

TOTAL THICKNESS: -

Cool Pro PIR Roof Panels

Core Thickness (mm)

Core Thickness (mm)	25	30	40	50	60	80	100	120	140	160
U-Value (W/m ² K)	0.72	0.62	0.49	0.40	0.34	0.26	0.21	0.18	0.14	0.11
R-Value (W/m ² K)	1.39	1.61	2.04	2.48	2.91	3.78	4.65	5.52	6.39	7.24

Cool Pro PIR Wall Panels

Core Thickness (mm)

Core Thickness (mm)	25	30	40	50	60	80	100	120	140	160
U-Value (W/m ² K)	0.86	0.77	0.58	0.46	0.38	0.29	0.23	0.19	0.16	0.11
R-Value (W/m ² K)	0.85	1.30	1.74	2.17	2.61	3.48	4.35	4.79	5.23	5.67

ADVANTAGES

- Extremely high fire resistance due to higher ISO index (>180)
- Generation of very low smoke.
- Higher thermal stability (<120 Degree Celcius)
- Regulates in-system temperature irrespective of weather conditions.
- Reliable, Durable, Leak proof, Sound proof roofing solution due to insulation.

GSTIN : 29AAKCM3773D1Z8



Value for Quality



UNIT 01

No 57, Sajjepalya, Narasimaiahpalya,
Magadi Main Road, Bangalore - 560091
GSTIN: 29AAKCM3773D1Z8

UNIT 02

Sy.no.28/1, Sy.no.28/2 & Sy.no.29/1,
Channenhalli Village, Tavarekere Hobli,
Bangalore South 562130
GSTIN : 29AAKCM3773D1Z8



+91 9019957421
+91 9113657226